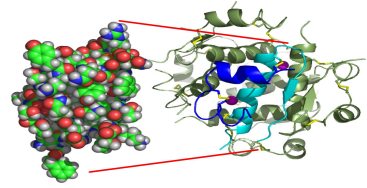


Facts you MUST know

Nick Mason & Heather McDermott

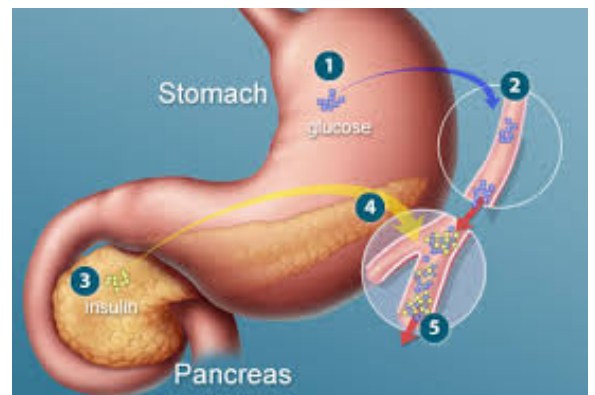




- Insulin is naturally found in the form of a protein
 - Proteins are polymers composed of amino acid monomers

Chemical Formula



- Without insulin, diabetes takes over the body
 - Diabetes is a disease in which the body cannot produce any or enough insulin which causes elevated levels of glucose in the blood.
 - Diabetes changes a person's lifestyle
 - Insulin is the most effective way to maintain blood sugar levels
 - Have to take daily injections of insulin to maintain blood sugar levels
 - Need to daily check blood sugar levels by pricking their finger
- Insulin is produced in the pancreas from beta cells
- Its purpose is to prevent the body from using fat as a source of energy
- Three main stages of production
 - 1) Preproinsulin
 - 2) Proinsulin
 - 3) Insulin



Positive Factors	Negative Factors
	
Breaks down sugar and allows the body to use it properly	Some insulins have additives known for harmful effects
Available for people with diabetes to inject	Is unavailable to be taken as a pill

TEST QUESTION:

★ What is the most positive factor of insulin (natural) in humans' lives? Why?

Answer:

Insulin prevents diabetes by removing excess glucose from the bloodstream. Diabetes is a serious illness that millions of people struggle with throughout all of their lives. The dangers and disadvantages range from constant worries over people with diabetes during physical activity to a shortened life span and risk of cancer.

